

The logo for MAX Toolings features the word "MAX" in a bold, italicized, sans-serif font. The letters are filled with a blue-to-white gradient and have a dark blue shadow effect, giving them a 3D appearance.

**MAX TOOLINGS**

One Stop Solution....

# Introduction

Max Toolings situated in Aurangabad City, a capital of Marathwada region in Maharashtra, India. A well-known company in cutting tools, fixtures, dies manufacturing and industrial automation field.

- State of the art manufacturing plant in MIDC waluj, Aurangabad area.
- Backed by a very strong management, having more than 12 years experienced personals in manufacturing field.
- Having expert team with well trained & motivated staff members as a resource to give a best class service & solutions for all your manufacturing requirements.
- With our talented skilled operators lead by dynamic senior management, who are seasoned professionals in project management, we are bound to give a quality services.
- Provides services, which are extremely customized & superior in quality to all the clients, with a tailor made solutions by using latest technologies.
- Owe our success to a firm and knowledgeable management team providing bespoke, personalized and multimode round the clock services to the clients.
- We are the team professionals who understands what customer need is and trying to fulfill those requirements in appropriate span of time with suitable price.
- We believe in 'Supply quality products in the best prices'.

# Max Toolings- Brief company Profile

## FIXTURE ON TIME

Customer focused mind set at every level

**10 Years**

Indexable Cutting Tools Experience

**13 People**

Working under Max Toolings

**1 Year**

Hydraulic , Pneumatic Fixtures Experience

**Rs 1 Crore**

Turnover in Y 2019-2020

**50 Fixtures+4500 Cutting Tools/Yr**

manufacturing capacities of the plants

## ONE STOP SOLUTION

Customized Manufacturing and Tooled up solutions

# Max Toolings Company Values

**Ethical Conduct**

**Deliver the  
Promise**

**Excellence**

**Team Work**

**Entrepreneurial  
Spirit**

# Max Toolings Five Finger Strategy for manufacturing excellence



## Shop floor with 5S concept

- Everything has a place, everything is in place.
- Visible performance. Visible improvements

## Supreme Quality:

- One Mindset - Don't receive defects. Don't make defects. Don't pass defects.
- Drive the process to achieve Six Sigma Quality
- Health and Safety at the core of manufacturing operation.

## Operator Skills:

- Prefer multi skilled operators rather than "super specialists"
- Special awards for best performers.

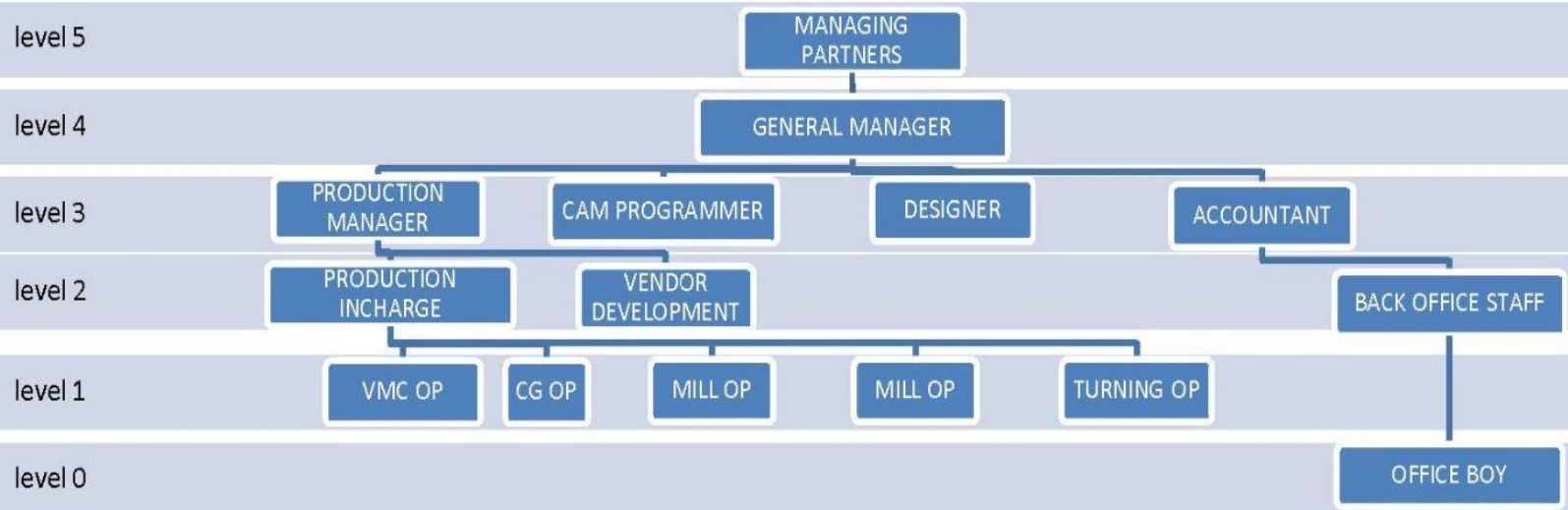
## Process capability:

- Measure process capability - If you can't measure, you can't improve.
- Data based process improvements - Let data speak for itself and not the opinions.
- Eliminate process waste - Kaizen,etc.
- Efficient use of people, material, space and equipment

## Innovation and creativity:

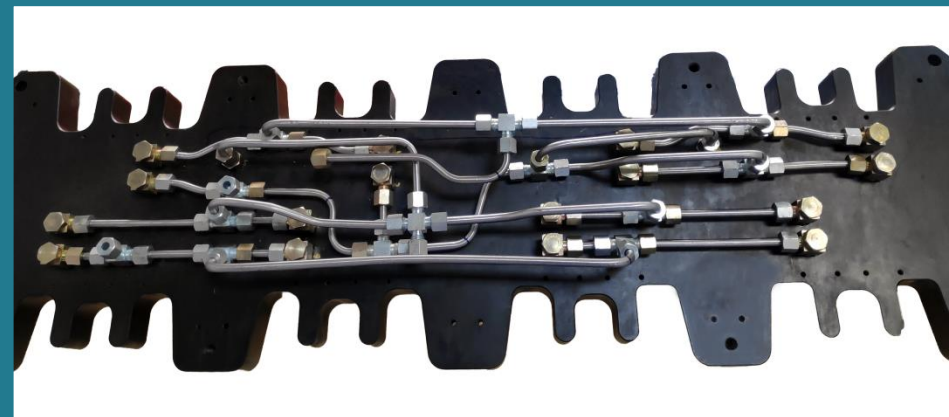
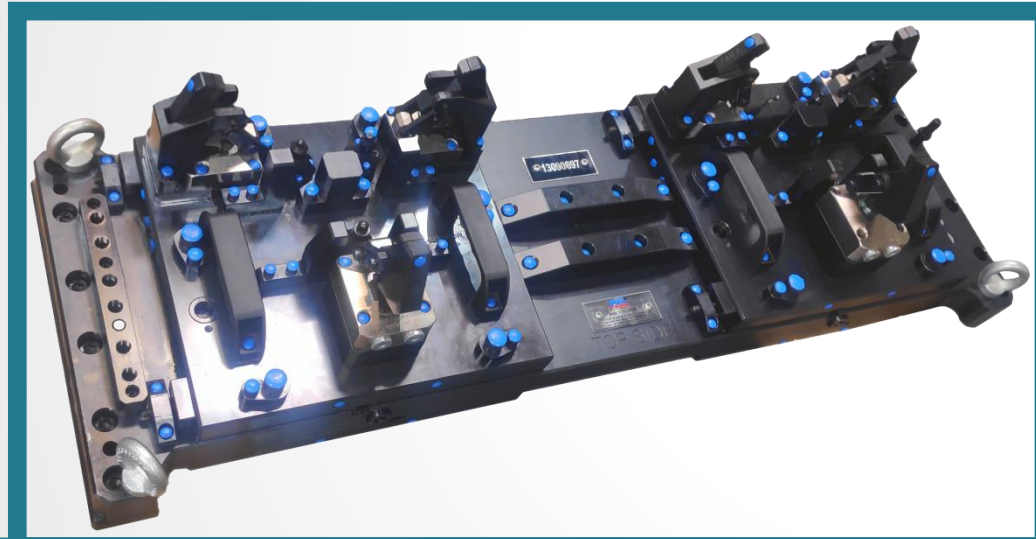
- 2 ideas per employee per month.
- Consistent motivation thorough public recognition
- Learning corners - Mistakes are our best teachers. Learn from it so that it won't be repeated.

# Organization Chart

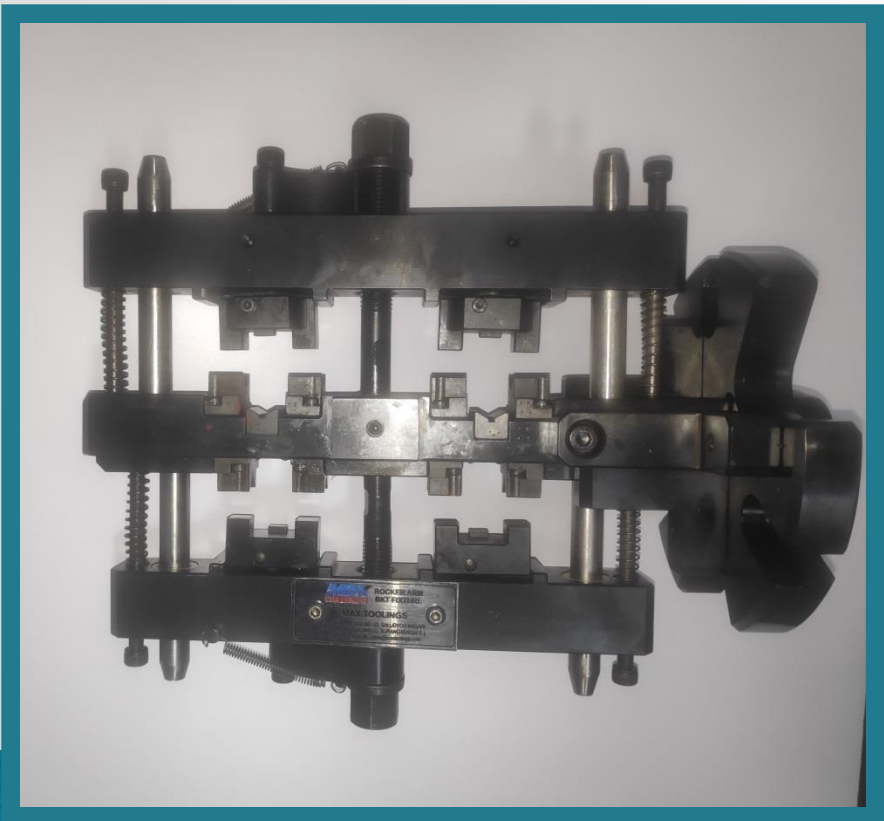


# Products Machined so far..

## HYDRAULIC FIXTURES



# MECHANICAL FIXTURES





# CUTTING TOOLS



# Modern Equipment



AMS MCV-450 VMC



Nikken 5 th Axis Rotary Attachment

# Modern Equipments



Screw Type Air Compressor  
Capacity -10 Bar

Hydraulic Stacker – 1.0 TON



# Manufacturing Facilities

#	Description of machine	Capacity & Nos.	Year of make	Units
1	AMS MCV-450 VMC	800x450x500 Spindle speed (rpm) 8000 Table size (mm) 1000 x 450 Max. load on table (Kgf.) 400	Y 2019	01
2	BFW VF-1 Milling M/c	Travel (mm) 1230 x 350 Table size (mm) 1245 x 230 Max. load on table (Kgf.) 170	Y 2009	01
3	BULGARIA FU251 MILLING M/C.	Travel (mm) 785 x 250 x 410 Table size (mm) 1120 x 250	Y 2009	01
4	MINAR 1A TURNING M/C.	BED Length:1676 MM, Max Swing over bed: Dia 495	Y 2010	01
5	JOHN SHIPMAN 1300EIU CYLINDRICAL GRINDING M/C	Between center 650 mm Max OD 250 mm	Y 1996	01

# Handling Facilities

S.No.	MACHINE NAME	QTY	CAPACITY - /TON
1	STACKER	1	1. TON

# Quality and Testing Facilities

Sl. No.	Description	Capacity & Nos.	Make & year of Mfg.	Calibration Status (Y/N)	Approval Qualification
1	SURFACE PLATE (GRADE 0 GRANITE)	2X1 MTRS	2019	NA	NA
4	MICROMETER (ANALOG TYPE)	0-25mm x 2 units, 25-50mm x 2 units, 50-75mmx2 units	Mitutoyo	Y	NABL
5	VERNIER CALIPER	Digital 0-200mm x 1unit, Digital 0-300mm x 2 unit	BAKER	Y	NABL
6	DIGITAL HEIGHT GAUGE	0-600 mm x 1 Unit	BAKER	Y	NABL
7	SLIP GAUGE	0.5-96 mm X 1Unit	YUZUKI	NA	NA

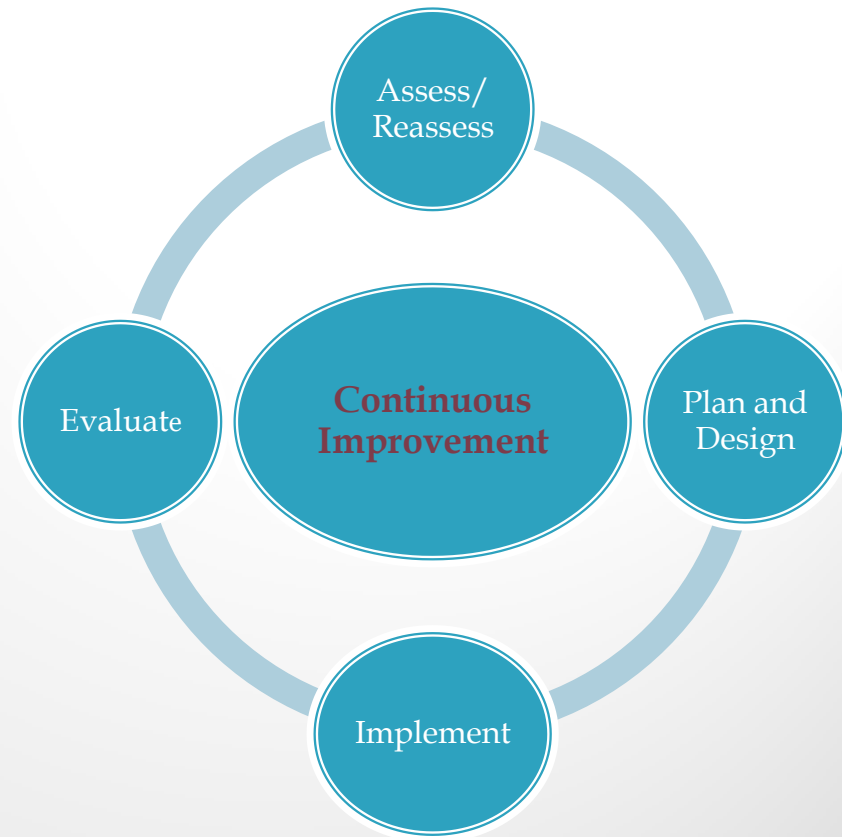
# Manpower Analysis

Division Status	Graduate	Diploma	Skilled	Un-Skilled
Design Department	02	00	00	00
Production Department	01	01	05	00
Back Office	01	00	00	01
Vendor Development	00	01	00	00
Accounts	01	00	00	00
Purchase & Stores	00	01	00	00
Total	05	03	05	01

# Max Toolings-Quality Process

## Our Commitments

- Committed to manufacture and supply of Fixtures with one mind set “FIXTURE ON TIME” and every time
- Committed to Right quality which exceeds Customer expectations.
- Committed to follow LEAN manufacturing to avoid non value added activities and wastes in manufacturing process.
- Committed to Continual improvement of our Quality Management System through effective implementation, in order to achieve customer delight
- Committed to follow Kaizen principles to improve productivity in business processes and supply chains



“FIXTURE ON TIME”



## Address

MAX TOOLINGS

GSTIN:27ABBFM2662C1ZL

Plot no. 29, Gut no. 23 ,

Sai Udyog Nagari, MIDC Waluj ,

Aurangabad(M.S.)India-431136

Cell No.: +91-9158005183, +91-8975905300

Email: sales@maxtoolings.com



**Thank You**

**[www.maxtoolings.com](http://www.maxtoolings.com)**